

4x3D

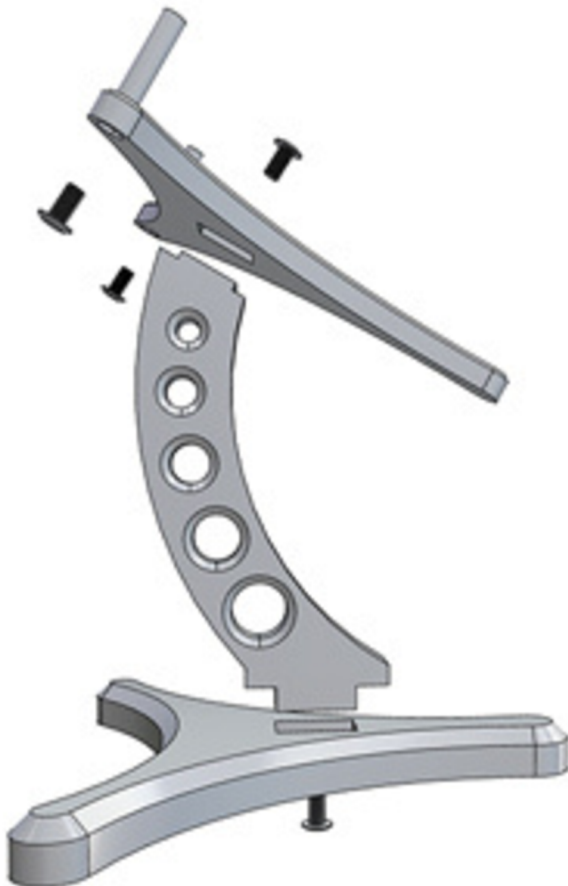
4x3D Drone Stand Assembly Instructions

Note: A Phillips head screwdriver is required for assembly (not included).

Assembly Instructions:

1. Attach the Blade to the Base:
2. Insert the Blade into the base, ensuring it is aligned correctly. Secure it with one of the larger screws (M4x8) using a Phillips head screwdriver.
3. Install the Top Plate:
4. Place the top plate onto the Blade and secure it with the second M4x8 screw.
5. Attach the Standoffs:
6. Align the 20mm standoffs with the upper holes on the top plate. Secure them from the bottom using the smaller screws (M3x6) and your Phillips head screwdriver.

Tip: Double-check all screws for tightness to ensure stability during use.



Support:

If you have any questions or need additional support, feel free to contact us at 4x3D.com/contact-us

Thank you for choosing 4x3D
—Enjoy your new display stand!

